

Windows Compliance Archive Solution

InveStore

Pegasus' InveStore® v4 delivers secure data storage management for Windows, providing the means to meet compliance regulations such as Financial (SEC, Sarbanes-Oxley), Medical (HIPAA, DICOM, PACS), Government (DOD), Legal Admissibility (ISO-18501 and 18509) and many others.

Using InveStore you can reduce your overall archive management costs by connecting and controlling all your archive based secondary storage technology in a heterogeneous storage environment within Microsoft Windows. With InveStore, users decide what type of archive hardware and media best fits their needs based on access and retention requirement, and total overall cost of ownership of the archive storage system. System functions are administered through an Explorer-like management console that includes wizards for common operations and enables remote administrator access. Off-line media tracking helps to manage disks removed from the library. An integrated backup utility allows for the copying of media for disaster recovery. Flexible write modes allow direct-to-disk archiving or caching for enhanced performance. InveStore supports any combination of WORM, UDO, PDD, MO, CD-ROM and DVD media.

Secondary Storage Virtualization

Pegasus InveStore manages the latest write-once and rewritable optical technologies from a single share point on the network, allowing applications to address archive data as a virtual storage pool from a single network share. InveStore can also manage multiple devices as a single storage pool, providing a higher return on investment from legacy devices as data centers grows.

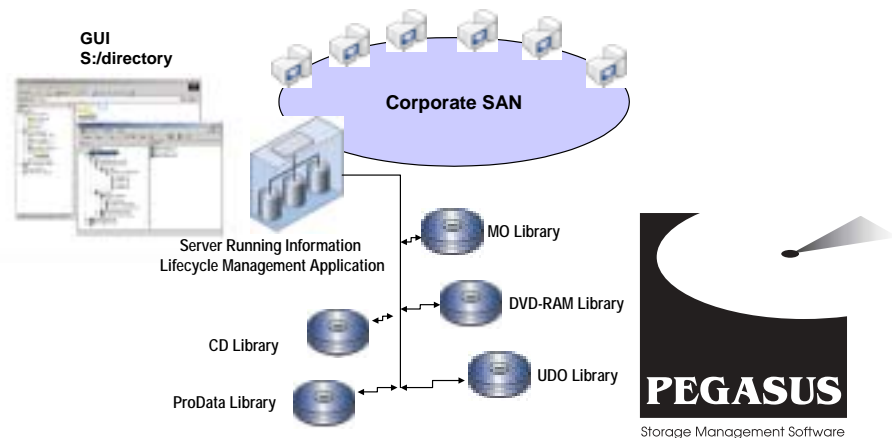
InveStore allows the user to create and manage multi-disc volumes with its intelligent spanning technology. This technology provides a way to manage multiple disks as a single volume or folder on the storage network. It also allows data larger than a single disk to be written over multiple platters.

Complete API Toolkit for Application Integration

Every copy of InveStore ships with an application programming interface for integration with application level software such as email archive, financial, healthcare and other information lifecycle management systems.

The InveStore API toolkit allows integrators to manage the complete integration of InveStore into their application and provide seamless access to their data on compliance storage devices such as write-once optical.

The InveStore API toolkit provides the hooks to command basic data management functions such as load and eject media, create volume sets and manage offline volume management. It also contains more advanced commands such as tracking metadata, file versioning and file modifications.



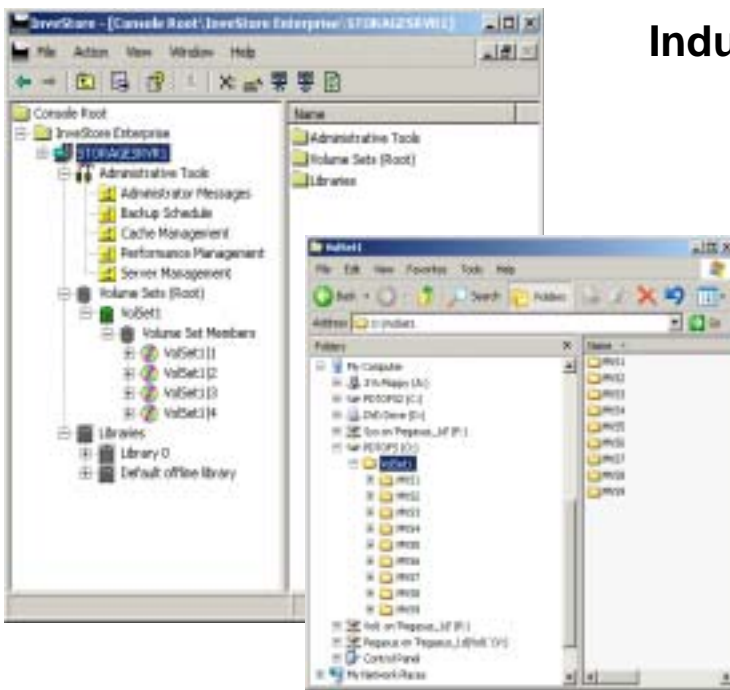
Pegasus Disk Technologies 2333 San Ramon Valley Blvd., San Ramon, CA 94583
Phone: 925-314-1800 Fax: 925-314-1801 Email: sales@pegasus-afs.com



Product Features

Windows 2000 and 2003 Systems support
Windows 2003 Storage Server Appliance Edition support
Off-line Volume Management
Heterogeneous access to secondary storage
Microsoft Management Console (MMC) Snap-in
Spanning of Files, Media, and Libraries
Support for UDO, PDD, DVD, CD, WORM and Erasable Disc
COM/DCOM based developer kit
HSM/ File Migration support via CaminoSoft and VERITAS
Supports Backup utilities from Computer Assoc., Dantz and VERITAS
No file or volume size limitations
Extensive legacy hardware support
InveStore provides two flexible interfaces:

- Drive letter access
- A developer API for integration with software applications.



Industry Leading Device Support

CD/DVD drives and libraries from Asaca, ASM, DISC, DSM, Hitachi, JVC, MDI, Nakamichi, NSM, Pioneer, Plasmon, Plextor, PowerFile, Sony and Toshiba

Ultra Density Optical drives and libraries from Hewlett Packard and Plasmon

Magneto Optical drives and libraries from ASM, DISC, DSM, Hewlett Packard, Hitachi, IBM, MaxOptix, MDI, Nikon, Panasonic, Pinnacle Micro, Plasmon and Sony

12" and 14" Optical drives and libraries from ATG, Cygnet, Kodak, Philips, Plasmon and Sony

ProData drives and libraries from Asaca, ASM, Kubota and Sony

Microsoft Management Console Snap in and Windows intuitive GUI



Pegasus Disk Technologies 2333 San Ramon Valley Blvd., San Ramon, CA 94583
Phone: 925-314-1800 Fax: 925-314-1801 Email: sales@pegasus-afs.com